



**GlobalIncidentMap.com**

## ESRI Marketplace Bundles

Welcome! Since 2006 GlobalIncidentMap.com has been gathering open-source incident data (OSINT) and mapping incidents across a broad swath of categories for those with a need for situational awareness. Aside from earthquakes, all data is human-curated; our analysts find, read, qualify, geolocate, and make a judgement call on every item in our feature layers. The parent company is a HUBZONE-certified entity familiar with U.S. government contracts. In addition to publicly-available information described below we do often create customized OSINT gathering and mapping solutions for clients with unique requirements. Please reach out to us with any ideas or questions.

### Available ESRI ArcGIS Feature Layer Bundles:

GlobalIncidentMap.com offers 3 feature layers bundles. One is free and available to everyone, one is paid and available to everyone, and one is paid but restricted to U.S. Government, U.S. Military, U.S. Law Enforcement, and certain corporate security departments. If you feel your organization should have access to our restricted data, please request a free trial and contact us to demonstrate your need.

**Free Data Bundle :** Amber Alerts & Other Missing Children, Earthquakes (aggregated from various governments), Forest Fires/ Wildfires globally. We intend to also soon offer a feature layer for missing backpackers, hunters, and other outdoors people to this free bundle. See descriptions below:

**Paid Data Bundle:** Global Terrorism & Suspicious Activity, Global Industrial Incidents/ Supply Chain Management Issues, Global Aviation Incidents, U.S Border Security Incidents, Global Church Security Incidents (all faiths), Global Coronavirus Incident Data, Global Cyber Incidents, Global Disease Outbreaks (primarily zoonotic diseases), Global Major Drug Interdictions, Global Food/Medicine Incidents, U.S. Hazmat Situations, Global Hooligans/Sports Fan Violence, Global Human Trafficking Incidents, Global Kidnapping For Ransom Incidents, Global Murder For Hire Incidents, Global Mystery Wildlife Incidents, Global Natural Disasters, U.S. Officer Safety Incidents, U.S School Security Incidents, U.S. Self-Defense Firearm Use Incidents, Global Threats To Journalists, Global Travel Warnings and Advice (aggregated from many governments), U.S. Gang Activity, U.S. Abuse of Power incidents. See descriptions below:

### Paid Data Bundle – Restricted:

Chinese Malign Activity Layer, Russian Malign Activity Layer, U.S. Presidential Threats Layer, Iran Situation Layer. Restricted to U.S. Government, U.S. Military, U.S. Law Enforcement, and some U.S. Corporate Security Departments. See descriptions below.

---

### Contact us:

Morgan Clements, CEO

Email: [mc@globalincidentmap.com](mailto:mc@globalincidentmap.com)

Cell: 417-254-0419

Website: <https://www.globalincidentmap.com>



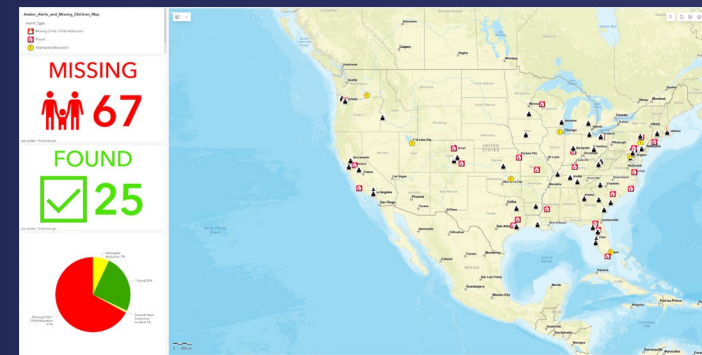
GlobalIncidentMap.com

## ESRI Marketplace Bundles

### Free Data Bundle

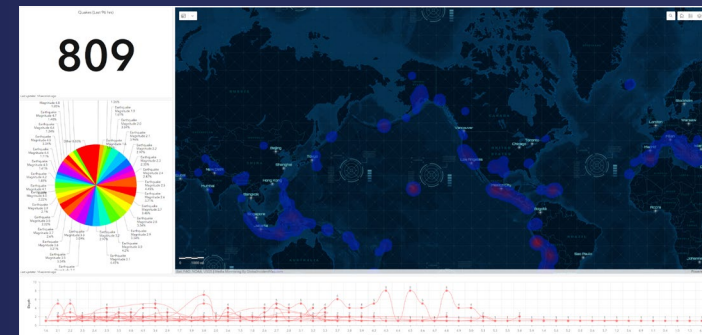
#### Amber Alerts/ Missing Children Incident Data

This feature layer is United States in scope. This feature layer may include Amber Alerts, or other missing children incidents. It may include active alerts, and cases where the missing child is recovered alive or deceased or remains missing.



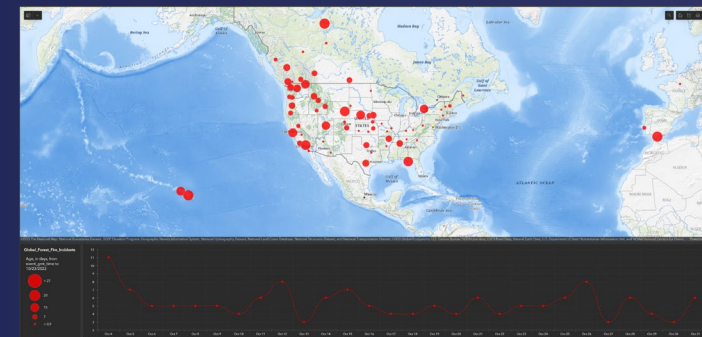
#### Global Earthquakes Incident Data

A Global Display Of Earthquakes Aggregated From Various Governments.



#### Global Forest Fire Incidents Incident Data

A global display of forest fires, wildfires, brush fires, etc. Typically, larger fires are included. May include fires caused by nature, man, accidents, or arson. In the USA this feature layer is most active during hotter/dryer months.







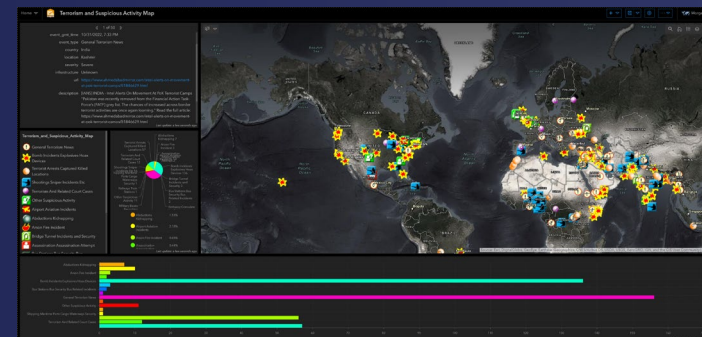
GlobalIncidentMap.com

## ESRI Marketplace Bundles

### Paid Data Bundle

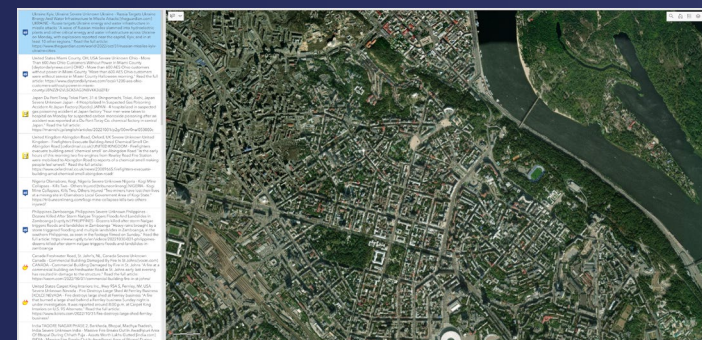
#### Terrorism and Suspicious Activity Incident Data

This feature layer may contain bombings, bomb threats, bomb hoaxes, threats to airports or other aviation incidents, threats to elected leaders, assassinations, threats to embassies, threats to railways, bus stations, power plants, or any other critical infrastructure, theft of radioactive or explosive material, bioterrorism, or any other form of terrorism.



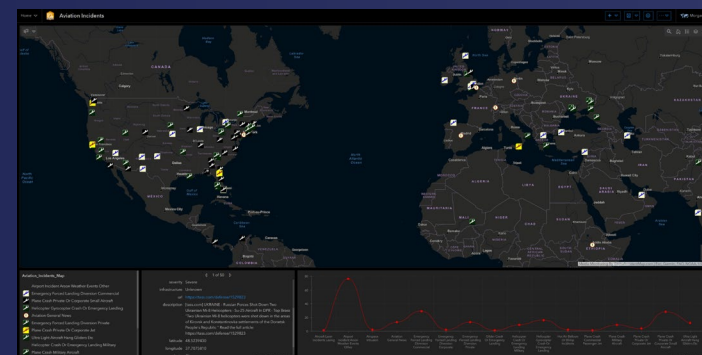
#### Industrial Incidents And Supply Chain Management Incident Data

This feature layer is global in scope. It may contain any incident anywhere which might tend to impact manufacturing, production, or transportation of goods. This feature layer may contain man-made or natural occurrences. Example incidents might include a chemical fire or explosion at a factory, an on-the-job-fatality at a warehouse causing a work-stoppage, a declaration of force-majeure, a mudslide impacting an industrial park, a worker strike or protest in an industrial zone, a major incident occurring on a highway between an industrial zone and a shipping port. This feature layer might contain current events impacting manufacturing such as chip shortages, covid-19, sanctions, etc.



#### Aviation Incidents Incident Data

A global display of aviation incidents – private, commercial, military, manned and unmanned. Threats to airports, plane crashes or emergency landings, aircraft laser incidents, and other items.





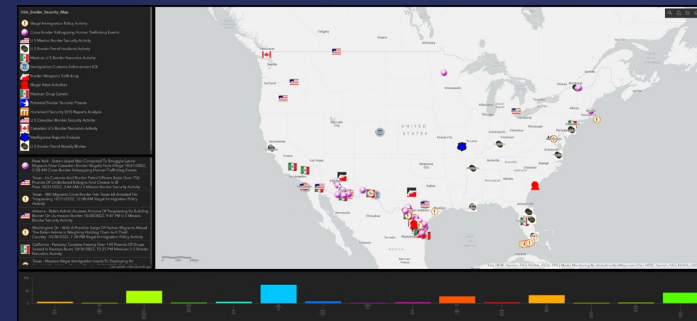
GlobalIncidentMap.com

## ESRI Marketplace Bundles

### Paid Data Bundle (cont'd)

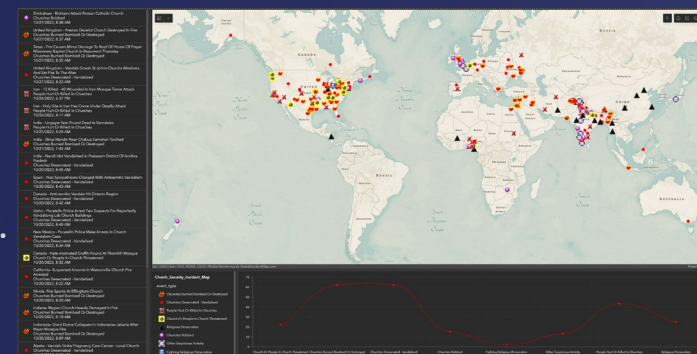
#### Border Security Incidents Incident Data

This feature layer is United States in scope. This feature layer may include any incident at northern or southern borders of the contiguous United States, or any non-contiguous state or territory. The feature layer may include any security event along the border, at border crossings, threats to border security, incidents across the border but in proximity to the border. The feature layer may include crimes related to human-trafficking, drug-trafficking, surges of illegal immigration, and other criminal or suspicious activities.



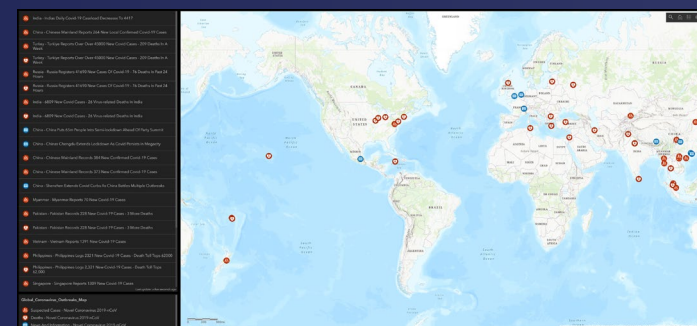
#### Church Security Incident Incident Data

This feature layer is global in scope. This feature layer may include threats to, or incidents at, any religious facility. All religions and faiths. This feature layer may also include incidents at religious schools, religious events, homes of religious leaders, etc. Examples could include church shootings, threatening graffiti, religious persecution, arson, or other suspicious or criminal activity.



#### Coronavirus Outbreaks Incident Data

A global display of coronavirus outbreaks, cases, deaths, and general news, including new variants, as necessary.







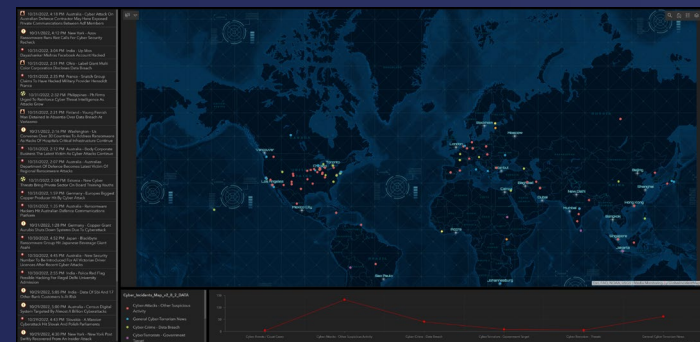
GlobalIncidentMap.com

## ESRI Marketplace Bundles

### Paid Data Bundle (cont'd)

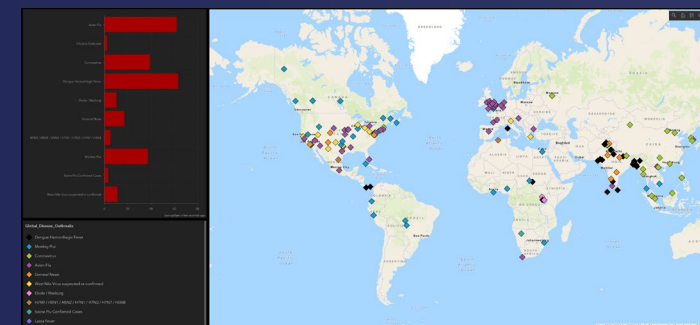
#### Cyber Incidents Incident Data

This feature layer is global in scope. This feature layer may contain incidents of hacking, defacements, breaches, and other incidents related to cyber security.



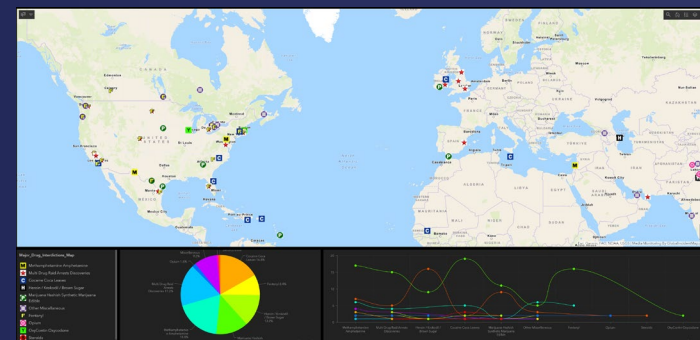
#### Global Disease Outbreaks Incident Data

This feature layer is global in scope. This feature layer does not attempt to map all incidents of the flu or cholera, but rather it depicts primarily those diseases which have bioterrorism/biowarfare potential, or which are otherwise of great public interest. It may include incidents of death, infection, or suspected infection. This feature layer will also include outbreaks of unknown origin, mystery diseases.



#### Major Drug Interdictions Incident Data

This is a global display of major drug busts – heroin, cocaine, meth, khat, very large marijuana busts (but not small ones), fentanyl, steroids, oxycontin, etc.





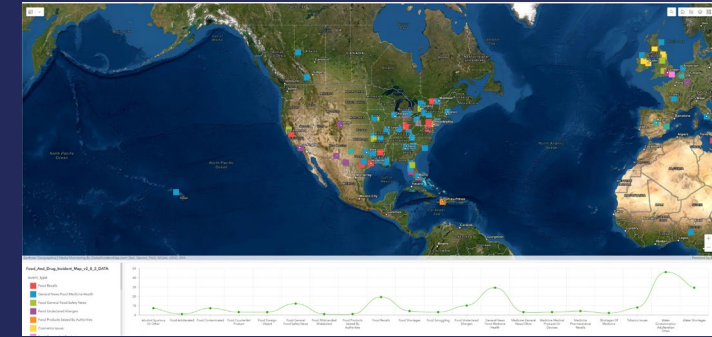
GlobalIncidentMap.com

## ESRI Marketplace Bundles

### Paid Data Bundle (cont'd)

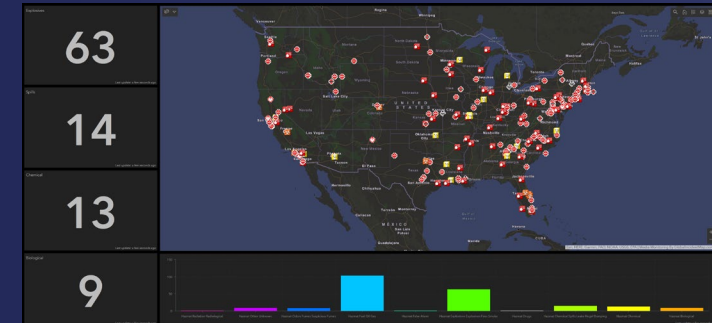
#### Food And Drug Incident Data

A Global Display Of Problematic Food And Medicine Incidents - Adulteration, Counterfeiting, Recalls, Spurious Ingredients, Food Tampering, Smuggling, Mislabeled Products, Undeclared Allergens In Products or Food. May Include Food, Medicines, Alcohol, Tobacco, Cosmetics, etc.



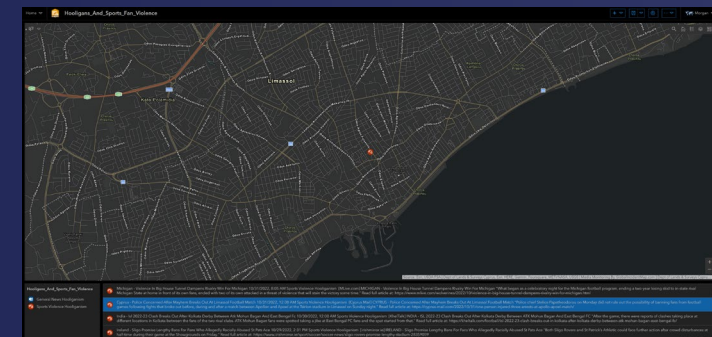
#### Hazmat Situations Incident Data

This feature layer is United States in scope. This feature layer may include any situation which results in deployment of a HAZMAT team. Example incidents include chemical fires/explosions, gas leaks, meth labs, ricin incidents, radioactive incidents, evacuations due to unknown chemicals/gases and may include false alarms.



#### Hooligans And Sports Fan Violence Incident Data

This feature layer is global in scope. This feature layer primarily depicts incidents related to sports-fan violence, sports-related protests or related suspicious or criminal activities.





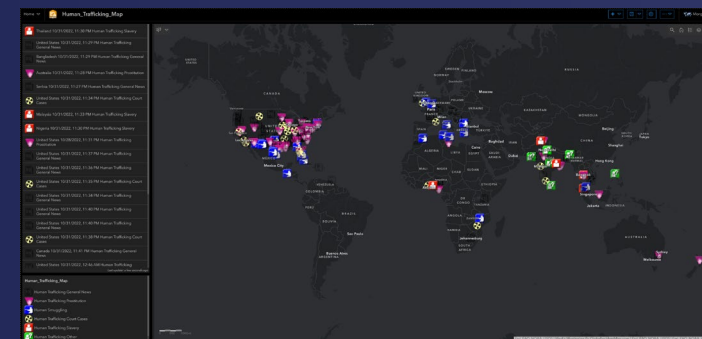
GlobalIncidentMap.com

## ESRI Marketplace Bundles

### Paid Data Bundle (cont'd)

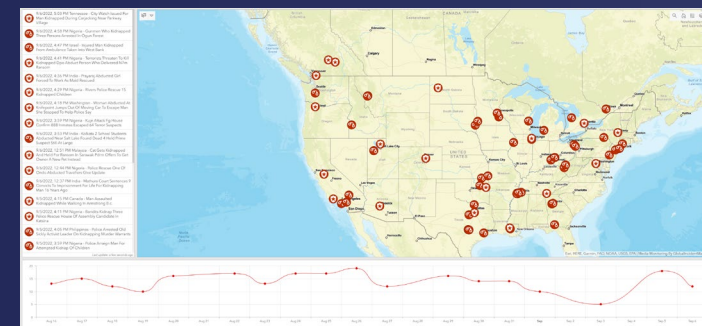
#### Human Trafficking Incident Data

This feature layer is global in scope. This feature layer includes arrests and other situations related to the trafficking of humans, human smuggling, illicit trade in human organs, child trafficking, slavery, prostitution, etc. This feature layer may also include generally related news, court cases, and other related items.



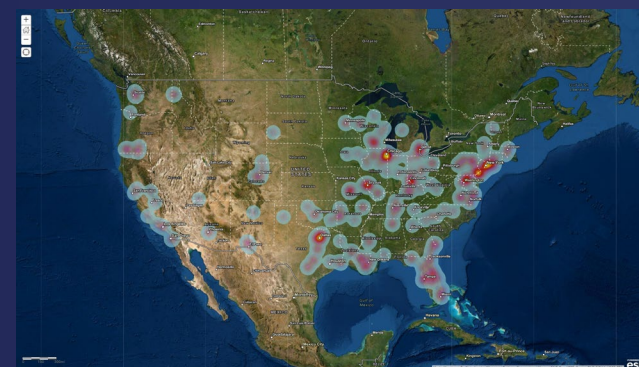
#### Global Kidnapping For Ransom Incident Data

A global display of kidnappings for ransom, politically-motivated kidnappings, and other related incidents.



#### Murder For Hire Incident Data

This feature layer is United States in scope. This feature layer may include any item deemed related to murders for hire – and may include arrests and court cases.







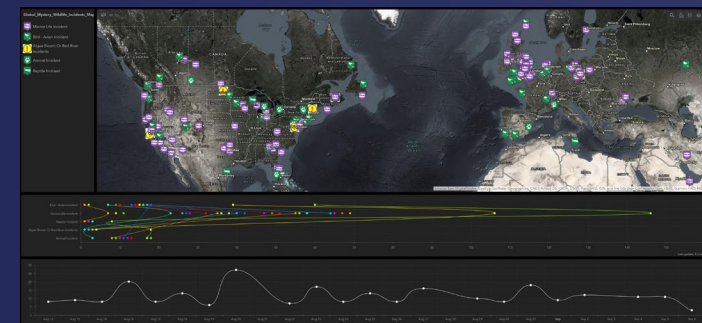
GlobalIncidentMap.com

## ESRI Marketplace Bundles

### Paid Data Bundle (cont'd)

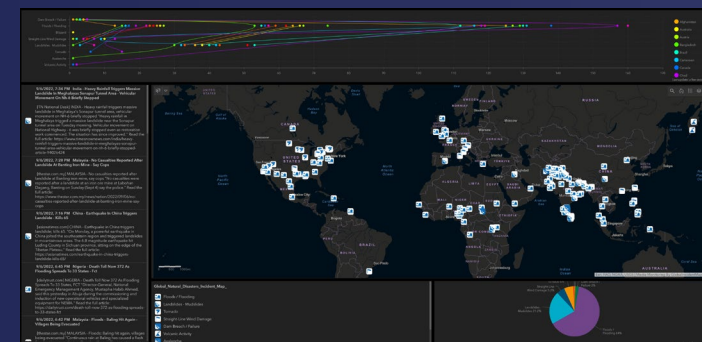
#### Global Mystery Wildlife Incidents Incident Data

A global display of mysterious or unusual incidents involving wildlife - fish kills, birds falling from the sky, etc. At times useful for awareness of natural disasters, chemical releases, or bioweapons testing.



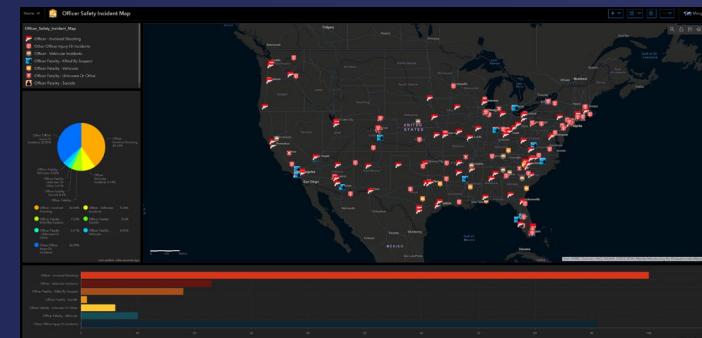
#### Global Natural Disasters Incident Incident Data

A global display of natural disasters, land slides, mud slides, flooding, etc.



#### Officer Safety Incident Incident Data

This feature layer is United States in Scope. This feature layer includes incidents where law enforcement of any kind are threatened, harmed, or killed in the line of duty. It could include vehicle accidents, shootings, bomb threats, assaults, or any other harmful or threatening activity.







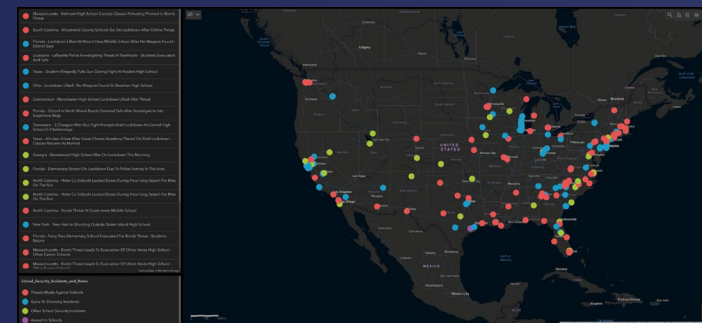
GlobalIncidentMap.com

## ESRI Marketplace Bundles

### Paid Data Bundle (cont'd)

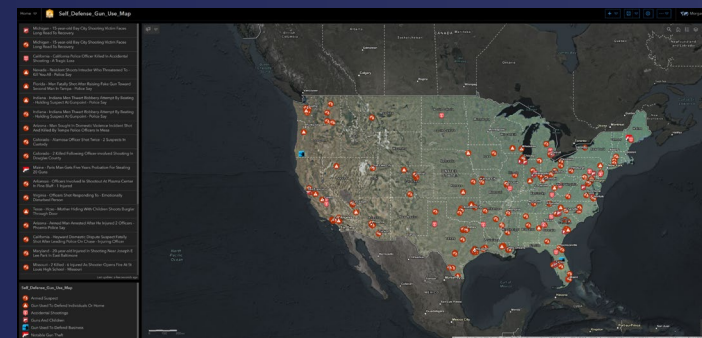
#### School Security Incidents and News Incident Data

This feature layer is United States in scope. This feature layer contains security incidents at schools of any kind within the USA. This feature layer includes all types of facilities from pre-schools to grade schools, high-schools to universities, and may include religious, trade, or other types of educational facilities. School shootings, bomb threats, evacuations, crimes, and other suspicious activities.



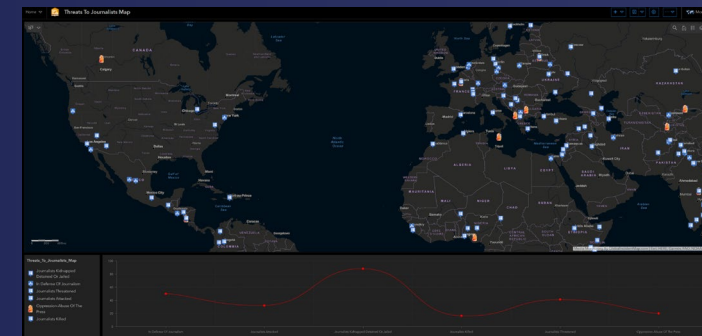
#### Self Defense Gun Use Incident Data

This feature layer is USA in scope. This feature layer contains incidents where a firearm has been used in self defense.



#### Threats To Journalists Incident Data

This feature layer is global in scope. This feature layer covers attacks against journalists, kidnapped journalists, certain arrests/jailed journalists, threatened journalists. The feature layer may include attacks against specific journalists, or threats to entire news media organizations. This feature layer may include incidents of oppression of journalism, journalists killed or hurt while performing their jobs, evacuations of facilities. Any type of journalist qualifies, television, radio, print, internet, and in some cases citizen-journalists.





GlobalIncidentMap.com

## ESRI Marketplace Bundles

### Paid Data Bundle (cont'd)

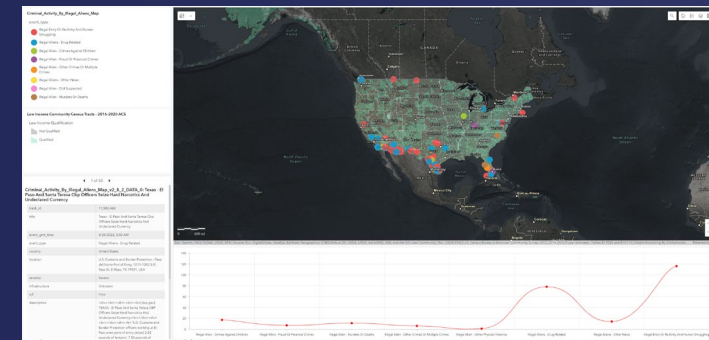
#### Travel Warnings And Safety Incident Data

This feature layer is global in scope. This feature layer may contain items related to any form of travel warnings, travel alerts, travel advice, aggregated from many governments not just U.S. Dept of State.



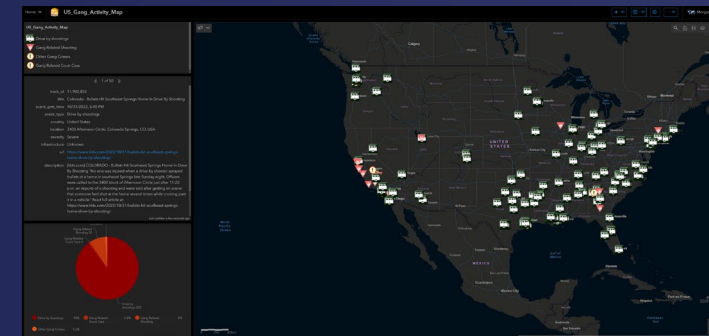
#### Criminal Activity By Illegal Aliens Incident Data

This feature layer is North America in scope. This feature layer primarily depicts crimes committed by illegal aliens within the USA or impacting the USA.



#### U.S. Gang Activity Incident Data

This feature layer is United States in scope. This feature layer may contain any gang-related incident, shootings, threats, arrests, crimes, or other related activities. We may alter the content policy on this feature layer in the near future, or we may cancel this feature layer. We have been thinking about changing the categories we currently use within this feature layer to more generic categories, such as 'drive-by shooting'.





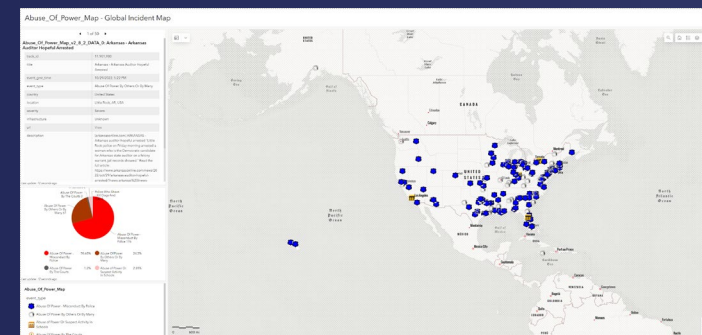
GlobalIncidentMap.com

## ESRI Marketplace Bundles

### Paid Data Bundle (cont'd)

#### Abuse Of Power Incident Data

This feature layer is United States in scope. This feature layer may include incidents of abuse of power by elected leaders, law enforcement, courts or judges, or other powerful individuals within the United States.



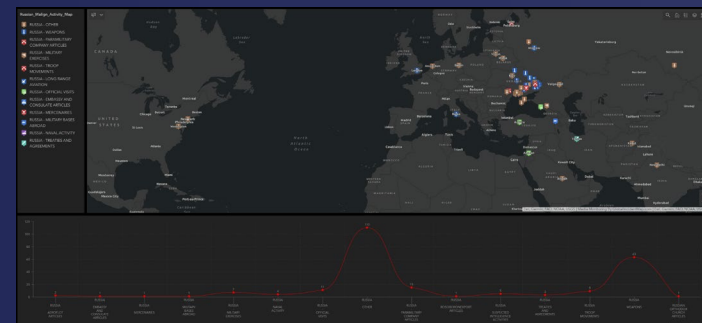
#### COMING SOON! Backcountry Danger Incident Data

A global display of outdoor incidents, missing hikers, deceased mountain climbers, hunting accidents, backcountry incidents which require rescue or recovery.

### Paid Data Bundle – Restricted Audience

#### Russian Malign Activity Incident Data

This feature layer is global in scope. Until recently this feature layer was populated with data specifically, under military contract for a military intelligence requirement. This feature layer contains all manner of foreign influence and activities attributed to Russia, and may include things like military movements, naval activities, espionage, internal vulnerability or fragility, changes in leadership, comments made by Russian leadership, suspected intelligence activities, and other items of interest to Russia watchers. Due to current events this feature layer has an inordinate number of events related to the existing activity in and near Ukraine, while maintaining a global scope.







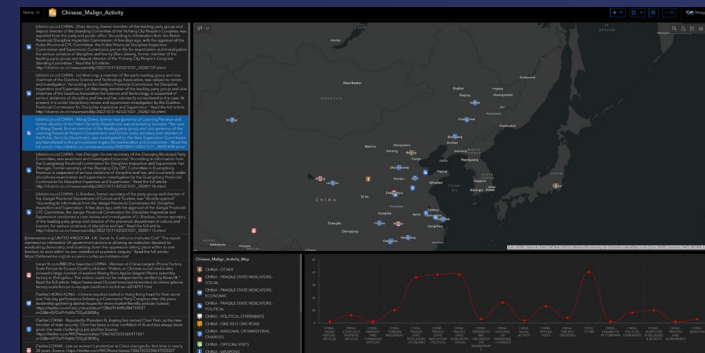
GlobalIncidentMap.com

## ESRI Marketplace Bundles

### Paid Data Bundle – Restricted Audience (cont'd)

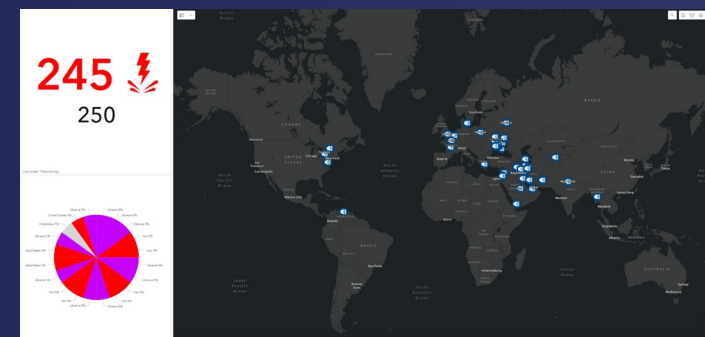
#### Chinese Malign Activity Incident Data

This feature layer is global in scope. Until recently this feature layer was populated with data specifically, under military contract for a military intelligence requirement. This feature layer contains all manner of foreign influence and activities attributed to China, and may include things like military movements, naval activities, espionage, internal vulnerability or fragility, changes in leadership, comments made by Chinese leadership, suspected intelligence activities, and other items of interest to China watchers.



#### Iran Situation Incident Data

This feature layer is global in scope, but primarily focuses on the area around the country of Iran. This feature layer may include any item related to extreme activity on the part of Iran, or against Iran. It may include political statements, opinions/editorials, press releases. It may include items related to sanctions, war, cooperation, terrorism, geopolitical or other factors.



#### U.S. Presidential Threats Incident Data

A global display of incidents related to or threats against the U.S. Presidency and The White House, Air Force One, Camp David, and other protected persons and assets.

